

# Dalla Vale



**Luxurious Freehold Cluster Home**

Return to Nature. Revitalise your Senses.

**FUTURE LINEAR PARK**

**FITNESS AREA**

**CHILDREN'S PLAYGROUND**

**SPRINGLEAF AVENUE**



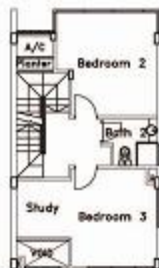
- |   |                                    |
|---|------------------------------------|
| <b>A</b> Club House                     | <b>J</b> Lounge Garden             |
| <b>B</b> Sentry Post                    | <b>K</b> Hydrotherapy Foot Massage |
| <b>C</b> Entrance Water Feature Wall    | <b>L</b> Access Chargers           |
| <b>D</b> Children's Playground          | <b>M</b> Lounge Pool               |
| <b>E</b> Reflective Pool                | <b>N</b> Pavilion                  |
| <b>F</b> Water Reflexology Foot Massage | <b>O</b> Vichy Shower Massage      |
| <b>G</b> Sandeck                        | <b>P</b> Lap Pool                  |
| <b>H</b> Side Gate                      | <b>Q</b> Swan Neck Shower Jets     |
| <b>I</b> Reflexology Area               | <b>R</b> Hotting Pool              |
| <b>S</b> Jacuzzi                        | <b>S</b> Watersley Area            |



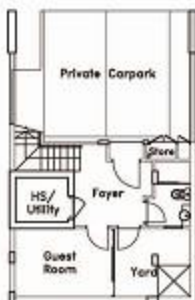
**TYPE A1bp** (Hse No. - 194, 198)



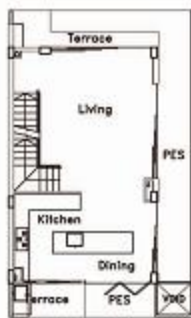
**2ND STOREY PLAN**



**3RD STOREY PLAN**



**BASEMENT PLAN**



**1ST STOREY PLAN**



**ATTIC PLAN**



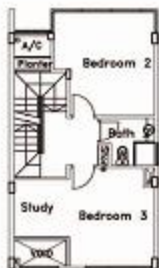
**KEY PLAN**

The above plan is subject to change as may be approved by the relevant authorities.

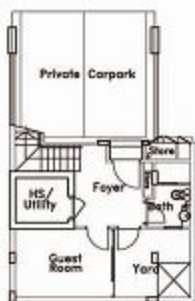
**TYPE A3b** (Hse No. - 114)



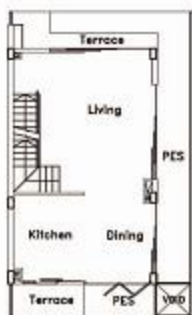
**2ND STOREY PLAN**



**3RD STOREY PLAN**



**BASEMENT PLAN**



**1ST STOREY PLAN**



**ATTIC PLAN**



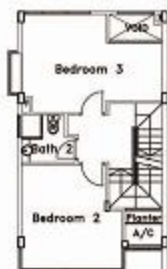
**KEY PLAN**

The above plan is subject to change as may be approved by the relevant authorities.

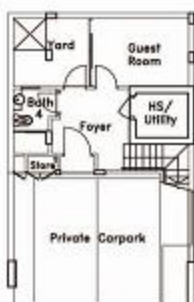
**TYPE B1bp** (Hse No. - 186)



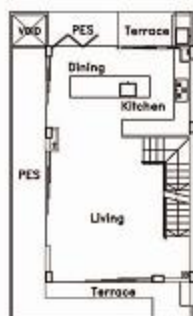
**2ND STOREY PLAN**



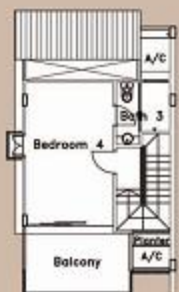
**3RD STOREY PLAN**



**BASEMENT PLAN**



**1ST STOREY PLAN**



**ATTIC PLAN**



**KEY PLAN**

*The above plan is subject to change as may be approved by the relevant authorities.*



## Escape to nature. An Oasis within easy reach.

Imagine the freedom and space of landed property, with the facilities of a condominium, and more. Dalla Vale, a cluster development of semi-detached houses in the exclusive residential enclave of Springleaf Avenue, offers you the best of both worlds. Designed around a modern tropical spa concept, four bedrooms and a cosy guest room are spread over each home. With its resort-style facilities, proximity to the greenery of Sungei Seletar Nature Reserve and Upper Seletar Reservoir, tranquility is yours to enjoy, right at your doorstep.







**Far East Organization**  
INSPIRING BETTER LIVES



The only developer in the world to win  
five FIABCI Prix d'Excellence awards  
the highest honour in international real estate

**Call 65348000**

**[www.fareast.com.sg](http://www.fareast.com.sg)**